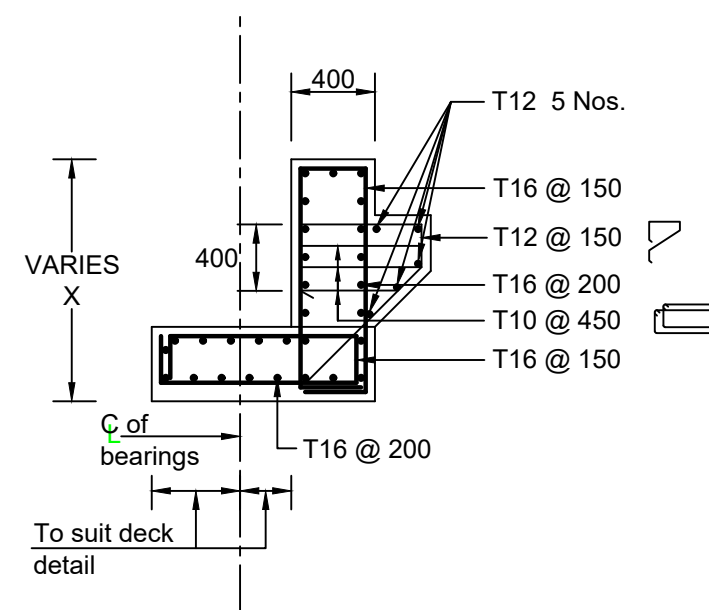
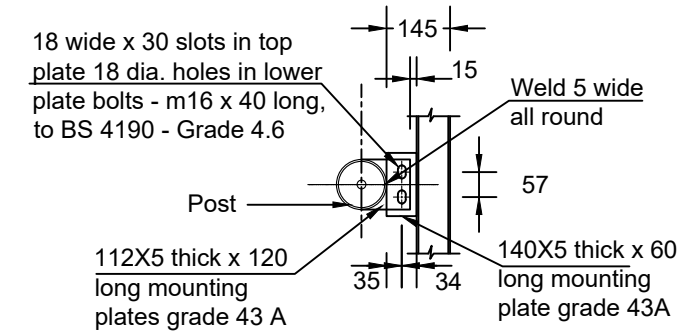


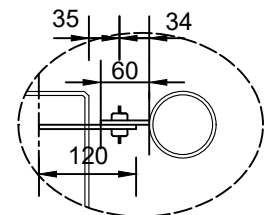
BEARING SHELF DIMENSION DETAILS



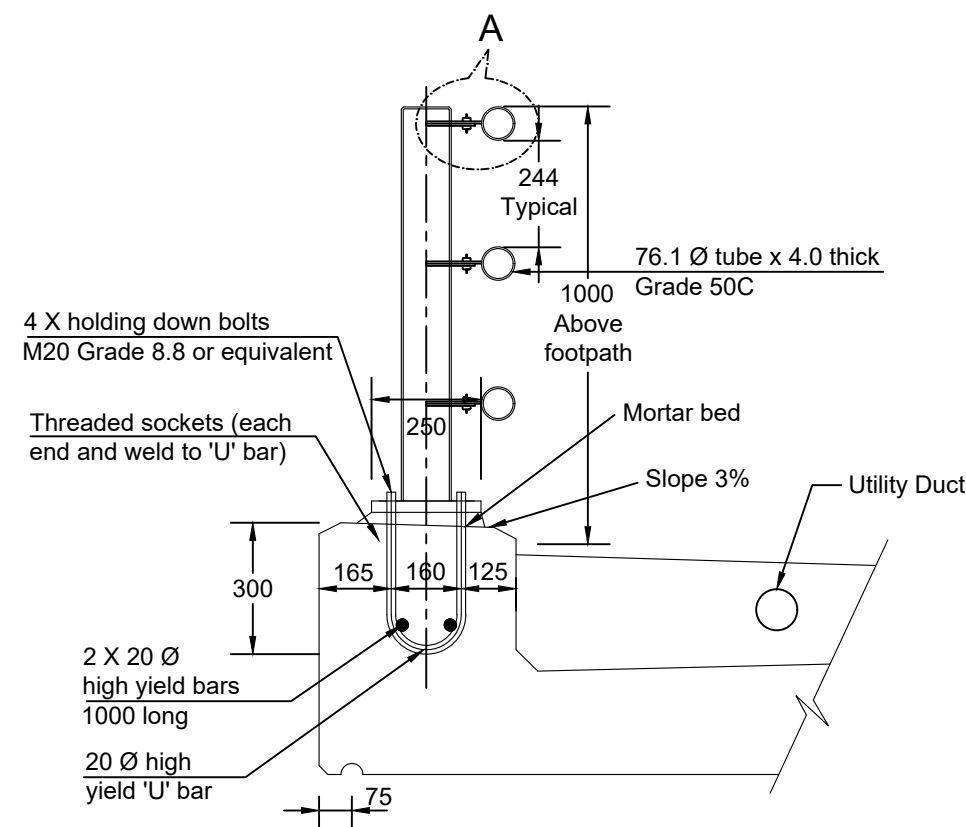
BEARING SHELF REINFORCEMENT DETAILS



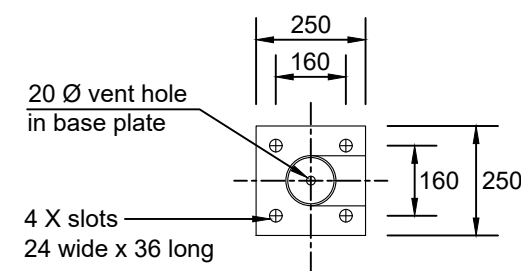
PLAN



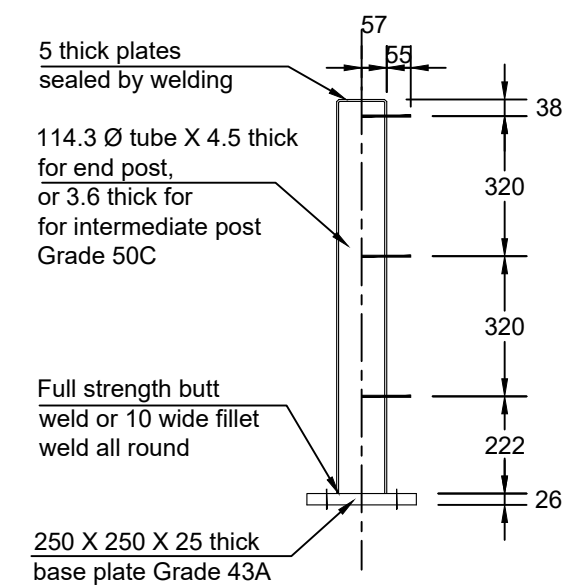
DETAIL A



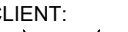
SECTION THROUGH PARAPET



END AND INTERMEDIATE POST PLAN



END AND INTERMEDIATE POST SECTION

NO.	AMENDMENTS	DATE	CLIENT:			STANDARD BRIDGE DRAWINGS	BEARING SHELF DIMENSION & REINFORCEMENT DETAILS , PARAPET AND POSTS			
			 <div>REPUBLIC OF KENYA MINISTRY OF ROADS AND TRANSPORT P.O. BOX 30260-00100 NAIROBI</div>				DRAWING NO.: RDM/4/2/1/04			
								Date: Jan. 2024 Scale: N.T.S. Sheet No.:1/1		